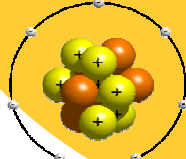
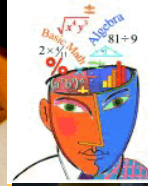
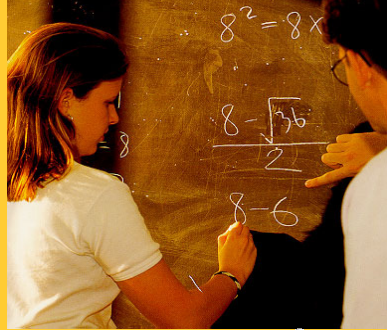




**The University of Texas at San Antonio
College of Education and Human Development
Academy for Teacher Excellence**

**Interested in being a Middle or High School Level
Mathematics, Science, or Special Education Teacher?**



**Accelerated Teacher Education Programs:
Middle Level and Secondary Math and Science
Special Education EC-12**

Program Requirements:

- **Bachelors Degree (Math or Science)/or Human Services Related Field of Study**
- **G.P.A. 3.0 last 60 semester hours**
- **Funding Available**

**Graduate Level Teacher Certification Program
leading to a Masters of Arts in Curriculum and
Instruction Degree**

**For more information, please call us at 458-6170
or visit us online at <http://ate.utsa.edu>**

Accelerated Teacher Education Program
Call us at: 458-6170
Website: <http://ate.utsa.edu>

Accelerated Teacher Education Program
Call us at: 458-6170
Website: <http://ate.utsa.edu>

Accelerated Teacher Education Program
Call us at: 458-6170
Website: <http://ate.utsa.edu>

Accelerated Teacher Education Program
Call us at: 458-6170
Website: <http://ate.utsa.edu>

Accelerated Teacher Education Program
Call us at: 458-6170
Website: <http://ate.utsa.edu>

Accelerated Teacher Education Program
Call us at: 458-6170
Website: <http://ate.utsa.edu>

Accelerated Teacher Education Program
Call us at: 458-6170
Website: <http://ate.utsa.edu>

Accelerated Teacher Education Program
Call us at: 458-6170
Website: <http://ate.utsa.edu>

Accelerated Teacher Education Program
Call us at: 458-6170
Website: <http://ate.utsa.edu>

Accelerated Teacher Education Program
Call us at: 458-6170
Website: <http://ate.utsa.edu>